

Suzhou Cozy House Equipment Co.,Ltd
Suzhou Cozy International House Tech Co.,Ltd

Office Add: Room 1201, NO#3 Building, Jundi Business Plaza, NO.3 Weihua Rd,
Suzhou Industrial Park, Suzhou, Jiangsu, China. 215122.

Web: www.cozymodular.com
chinacozy.en.alibaba.com
chinacozy.en.made-in-china.com

E-mail: 3068@chinacozy.com

Tel: +86-512-6272-0236

Fax: +86-512-6299-0759

Remarks: continuous improvements of our products, pictures are only for reference.

Prefab Bathroom Units

COZY International · 2023



CONTENTS

01

PREFAB BATHROOM UNIT

- 003 Product Introduction
- 004 SMC material
- 005 Comparison

02

PRODUCTS

LUZY SERIES

- 007 **Industrialized production**
- 008 LUZY models
- 009 BUL0816/0818
- 009 BUL1014
- 010 BUL1020
- 010 BUL1116
- 011 BUL1217
- 011 BUL1218
- 012 BUL1220
- 012 BUL1418
- 013 BUL1416
- 013 BUL1420
- 014 BUL1616
- 014 BUL1618
- 015 BUL1620
- 015 BUL1624
- 016 BUL1720-yihe
- 016 BUL1720-tinghe
- 017 LUZY Color options
- 019 Standard accessories

JUZY SERIES

- 021 **Waterproof floor**
- 022 JUZY models
- 023 08/09 series-Shower
- 023 08/09 series-Toilet
- 024 08/09 series-Squat Toilet
- 024 09 series-Toilet
- 025 BUJ1326

JUZY SERIES

- 025 BUJ1420
- 026 BUJ1424
- 026 BUJ1424_New
- 027 BUJ1616
- 027 BUJ1618
- 028 BUJ1620
- 028 BUJ1622
- 029 BUJ1624F
- 029 BUJ1624Z
- 030 BUJ1820
- 031 Color options
- 033 Standard accessories

HOZY SERIES

- 035 **Whirlpool drain**
- 036 HOZY models
- 037 BUH1216
- 037 BUH1316
- 038 BUH1416
- 038 BUH1418
- 039 BUH1420
- 039 BUH1620
- 040 Color options
- 041 Standard accessories

ENJOY SERIES

- 042 **Six Application Fields**
- 043 ENJOY models
- 044 BUE1022
- 044 BUE1219
- 045 BUE1220
- 045 BUE1224
- 046 BUE1416
- 046 BUE1422
- 047 Color options

ANZY SERIES

- 048 **Oversea Market**
- 049 ANZY models
- 050 BUN1624
- 050 BUN1622
- 051 BUN1418
- 051 BUN1218
- 052 Color options

03

TECHNICAL INFORMATION

- 053 Structure details
- 054 Horizontal drain style
- 054 Vertical drain style

04

PACKING AND INSTALLATION

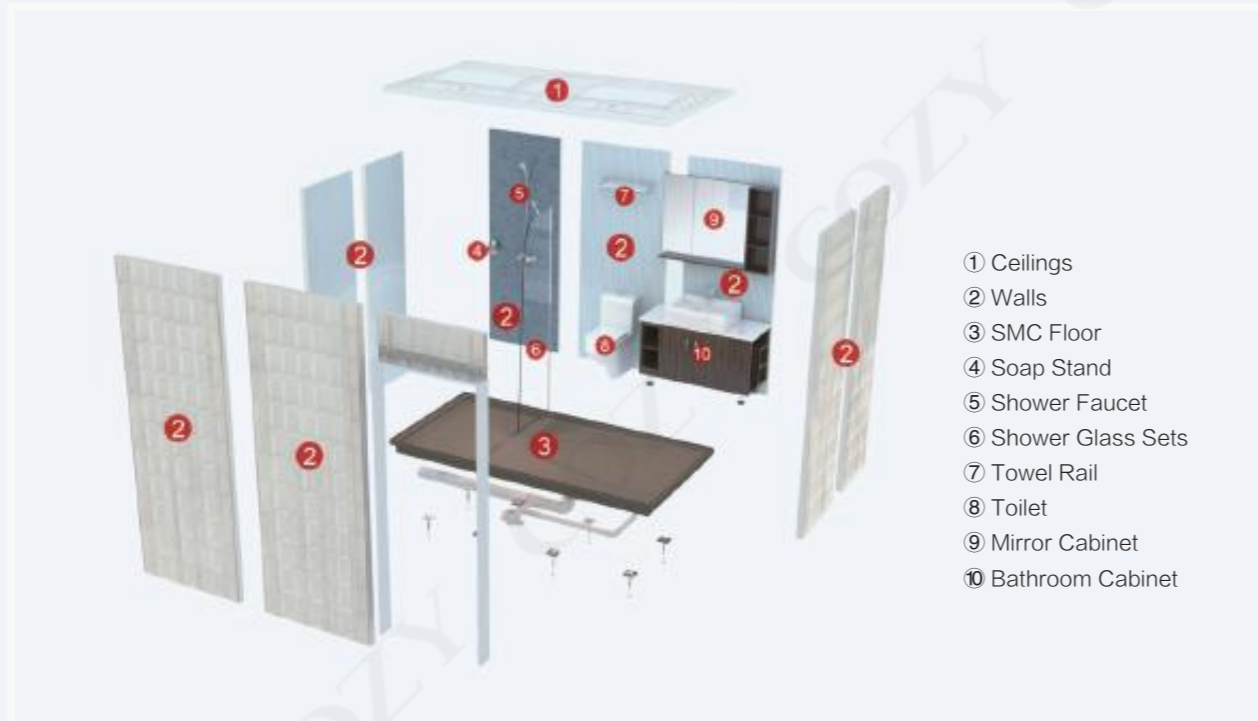
- 055 Packing details
- 056 Fast installation

05

COMPANY PROFILE

- 057 Six factories
- 058 Company profile
- 059 History
- 061 Projects
- 063 Partners

Product Introduction



- ① Ceilings
- ② Walls
- ③ SMC Floor
- ④ Soap Stand
- ⑤ Shower Faucet
- ⑥ Shower Glass Sets
- ⑦ Towel Rail
- ⑧ Toilet
- ⑨ Mirror Cabinet
- ⑩ Bathroom Cabinet

What is Prefab Bathroom Unit ?

A one-stop solution of using new high-tech materials to produce the whole bathroom floors, walls and ceilings, with dry construction. It integrates the functions of washing, toileting, showering and other sanitary facilities, can be installed only within four hours.



What material is used for Prefab Bathroom Unit?

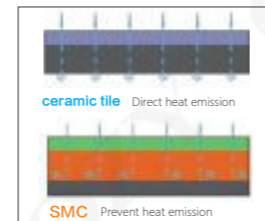
Sheeting Mold Compound (SMC), high strength and waterproof, the same material as air plane cabinet.

SMC Material



High hardness, Wear-resistance

SMC products are produced by 2500 tons pressing machine and precision steel mold under high temperature and pressure.



Heat insulation, Heat preservation

Prefab bathroom unit's material is the same as air plane cabinet. The glass fiber material is added to the coating to reduce heat loss, prevent heat conduction and heat radiation, so as to achieve the effect of heat preservation.



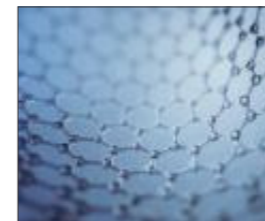
Easy to clean

SMC products have high density, smooth surface, no micro porous, easy to clean, effectively prevent bacterial from reproduction.



Safety

SMC material is warm and moist, even if accidentally fall in the bathroom, will not break the head and blood.



Long service life

SMC material long service life, stable quality, can be used for more than 20 years, far more than the ordinary family decoration cycle.



Energy saving and low carbon

SMC products have good performance of thermal insulation no need to install radiator. SMC products are totally green products without toxic and peculiar smell, the release of carbon is much lower than tile products in the whole process of raw material, production, assembling and usage.

Comparison

Traditional Bathroom

01 Energy Consumption

Energy consumption: 342 kw · h / ton,
1787.5 kg
Carbon dioxide emissions: 99%

02 Production

It is difficult to estimate the amount needed and a lot of expensive construction materials are wasted.

03 Construction Site

The construction period is long, loud noise, construction waste, difficult to clean up.

04 Construction Material

Many kinds of materials and complex, may contain formaldehyde, harmful to the user's body.

Prefab Bathroom Unit



Energy consumption: 180.16 kw · h / ton,
252.2 kg, **down 47%**
Carbon dioxide emissions: 14%



Standardized factory production, materials are used efficiently and waste is reduced.



Dry construction at site, **fast installation**, no noise, no dust in the construction process. **Construction efficiency increased by 70%!**



Environment-friendly materials, no harmful gas emissions, no odor, after installation can be immediately living. **Materials saved by 30%!**

Industrialized Production

- 30 production lines of prefab bathroom unit
- 50 sets of presses
- 600 sets of moulds
- 500,000 sets—design capacity
- 100,000 sets—annual output
- 270 sets—daily production
- 3 thousand ton per year of production capacity for SMC raw materials



SMC production line



Wall / Floor Steelmold



Wood production line

LUZY Models



BUL0816/0818 →P09



BUL1014 →P09



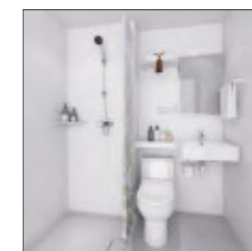
BUL1020 →P10



BUL1116 →P10



BUL1217 →P11



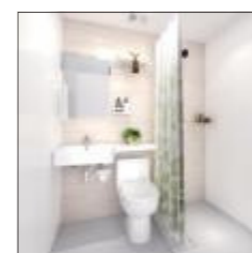
BUL1218 →P11



BUL1220 →P12



BUL1416 →P12



BUL1418 →P13



BUL1420 →P13



BUL1616 →P14



BUL1618 →P14



BUL1620 →P15



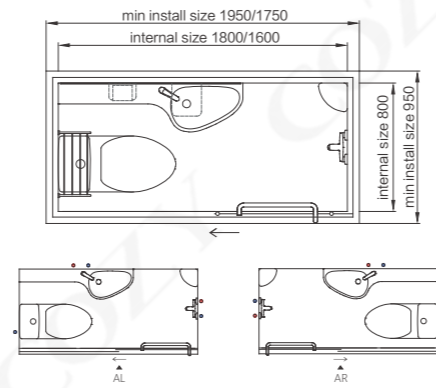
BUL1624 →P15



BUL1720_yihe →P16

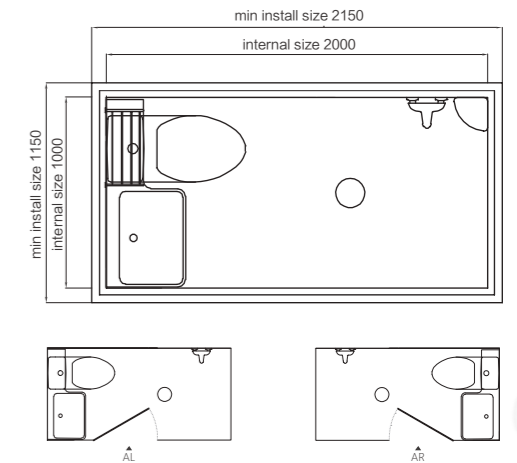


BUL1720_tinghe →P16



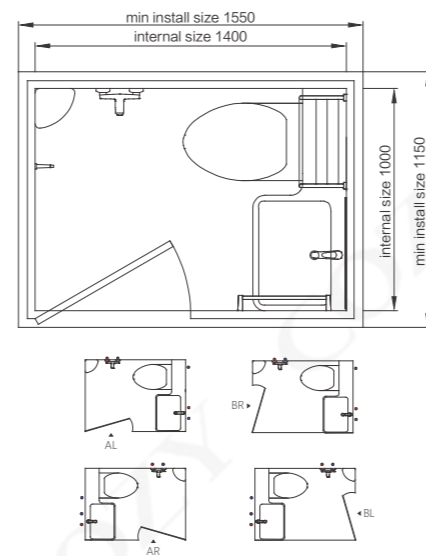
BUL0816/0818

Dimensions	Internal	External
Width	800mm	950mm
Length	1600mm/1800mm	1750mm/1950mm
Height	2000mm/2200mm	2500mm/2650mm
Available area	1.28m ² /1.44m ²	
Weight	≤200kg	
Shipping Info.	40HC-Flat Pack (55 sets / 50 sets), Assembled (12 sets)	



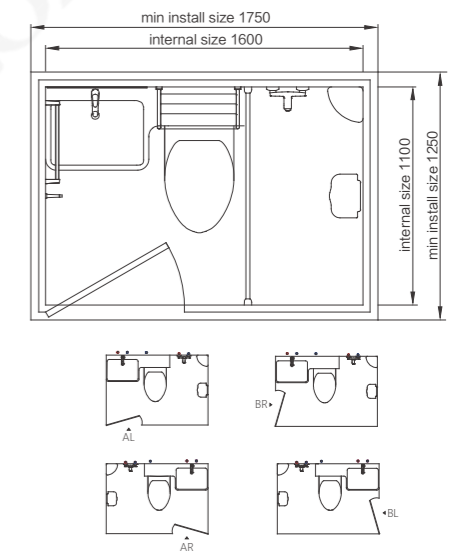
BUL1020

Dimensions	Internal	External
Width	1000mm	1150mm
Length	2000mm	2150mm
Height	2000mm/2200mm	2500mm/2650mm
Available area	2.00m ²	
Weight	≤250kg	
Shipping Info.	40HC-Flat Pack (40 sets), Assembled (10sets)	



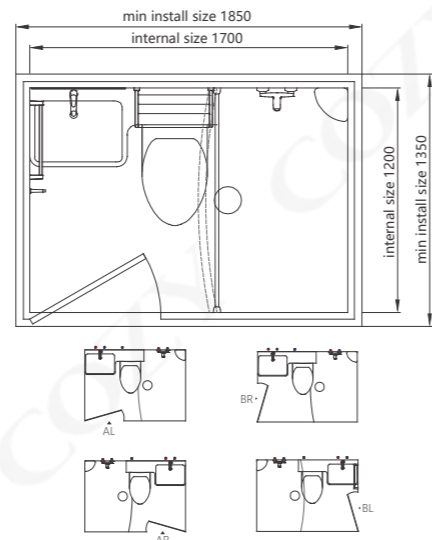
BUL1014

Dimensions	Internal	External
Width	1000mm	1150mm
Length	1400mm	1550mm
Height	2000mm/2200mm	2500mm/2650mm
Available area	1.40m ²	
Weight	≤200kg	
Shipping Info.	40HC-Flat Pack (50 sets), Assembled (10 sets)	



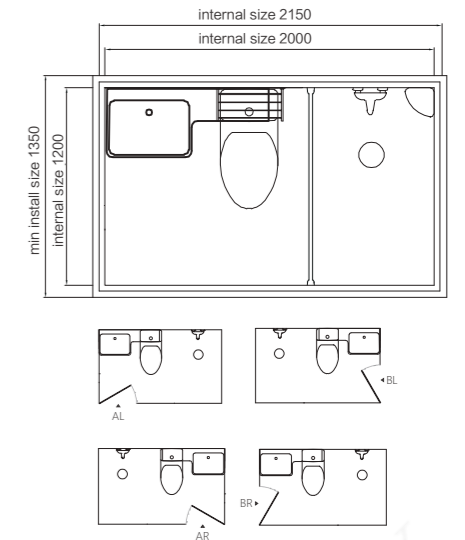
BUL1116

Dimensions	Internal	External
Width	1100mm	1250mm
Length	1600mm	1750mm
Height	2000mm/2200mm	2500mm/2650mm
Available area	1.76m ²	
Weight	≤220kg	
Shipping Info.	40HC-Flat Pack (45 sets), Assembled (9 sets)	



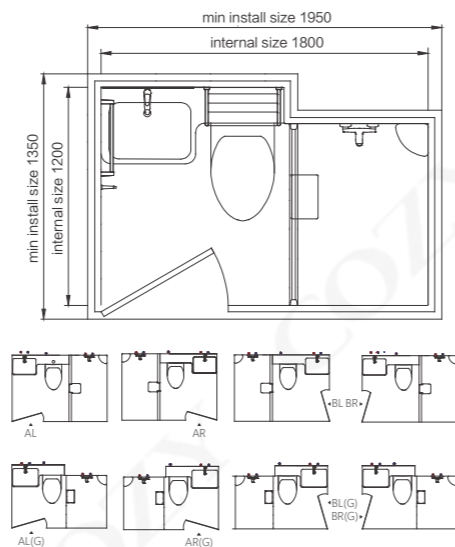
BUL1217

Dimensions	Internal	External
Width	1200mm	1350mm
Length	1700mm	1850mm
Height	2000mm/2200mm	2500mm/2650mm
Available area	2.04m ²	
Weight	≤250kg	
Shipping Info.	40HC-Flat Pack (40 sets), Assembled (8 sets)	



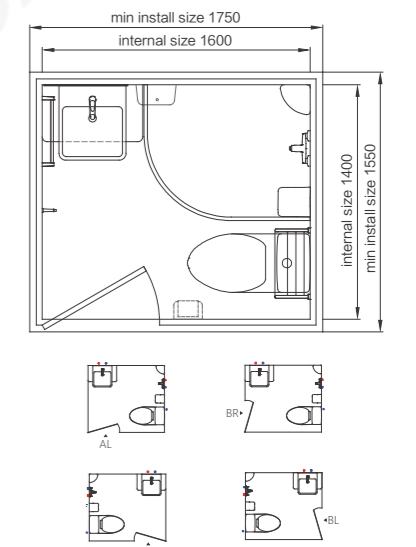
BUL1220

Dimensions	Internal	External
Width	1200mm	1350mm
Length	2000mm	2150mm
Height	2000mm/2200mm	2500mm/2650mm
Available area	2.40m ²	
Weight	≤250kg	
Shipping Info.	40HC-Flat Pack (40 sets), Assembled (8 sets)	



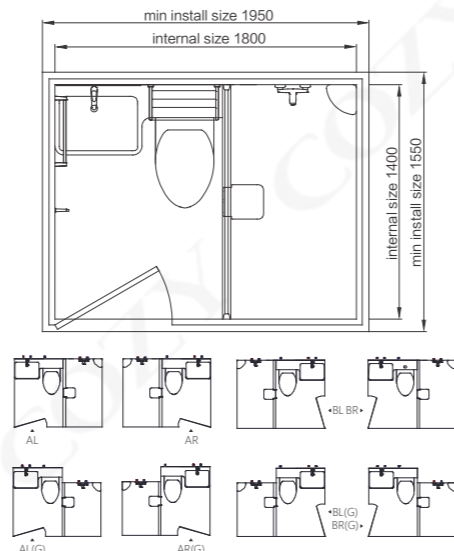
BUL1218

Dimensions	Internal	External
Width	1200mm	1350mm
Length	1800mm	1950mm
Height	2000mm/2200mm	2500mm/2650mm
Available area	2.16m ²	
Weight	≤250kg	
Shipping Info.	40HC-Flat Pack (40 sets), Assembled (8 sets)	



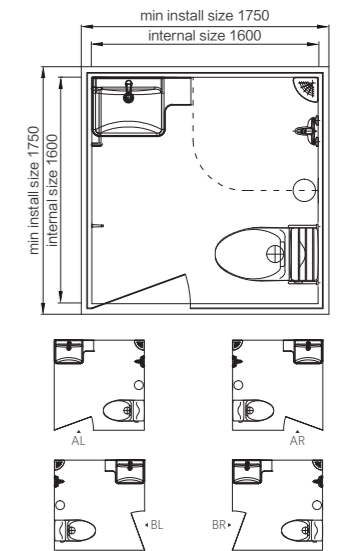
BUL1416

Dimensions	Internal	External
Width	1400mm	1550mm
Length	1600mm	1750mm
Height	2000mm/2200mm	2500mm/2650mm
Available area	2.24m ²	
Weight	≤220kg	
Shipping Info.	40HC-Flat Pack (35 sets), Assembled (7 sets)	



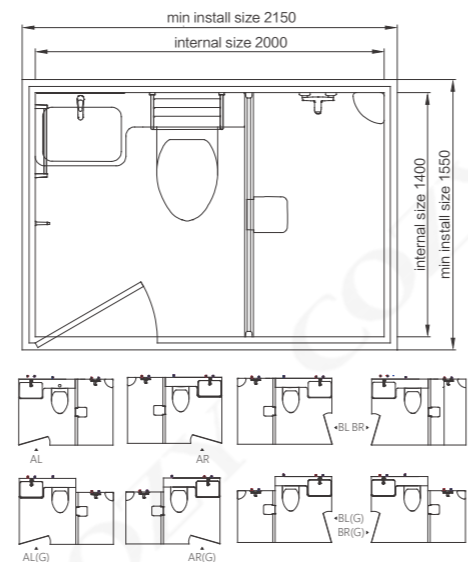
BUL1418

Dimensions	Internal	External
Width	1400mm	1550mm
Length	1800mm	1950mm
Height	2000mm/2200mm	2500mm/2650mm
Available area	2.52m ²	
Weight	≤250kg	
Shipping Info.	40HC-Flat Pack (35 sets), Assembled (7 sets)	



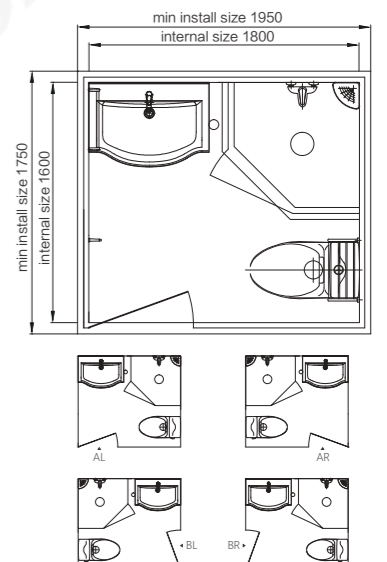
BUL1616

Dimensions	Internal	External
Width	1600mm	1750mm
Length	1600mm	1750mm
Height	2000mm/2200mm	2500mm/2650mm
Available area	2.56m ²	
Weight	≤230kg	
Shipping Info.	40HC-Flat Pack (35 sets), Assembled (7 sets)	



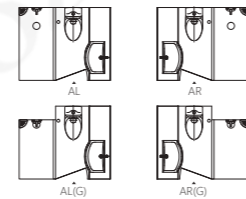
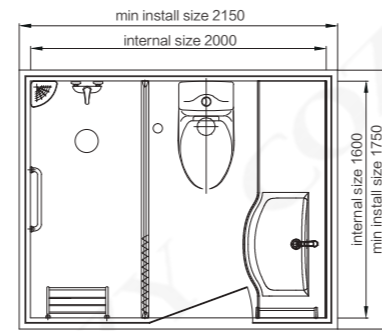
BUL1420

Dimensions	Internal	External
Width	1400mm	1550mm
Length	2000mm	2150mm
Height	2000mm/2200mm	2500mm/2650mm
Available area	2.80m ²	
Weight	≤250kg	
Shipping Info.	40HC-Flat Pack (35 sets), Assembled (7 sets)	



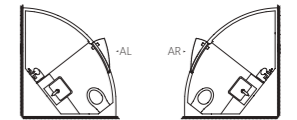
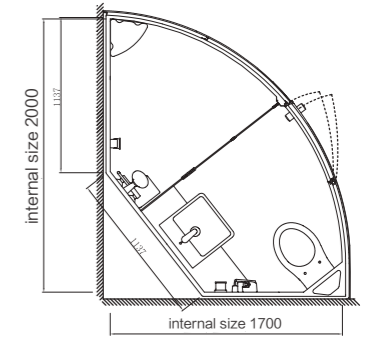
BUL1618

Dimensions	Internal	External
Width	1600mm	1750mm
Length	1800mm	1950mm
Height	2000mm/2200mm	2500mm/2650mm
Available area	2.88m ²	
Weight	≤270kg	
Shipping Info.	40HC-Flat Pack (30 sets), Assembled (6 sets)	



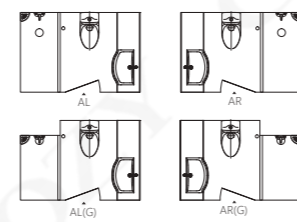
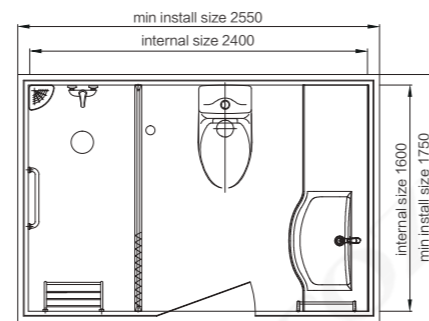
BUL1620

Dimensions	Internal	External
Width	1600mm	1750mm
Length	2000mm	2150mm
Height	2000mm/2200mm	2500mm/2650mm
Available area	3.20m ²	
Weight	≤320kg	
Shipping Info.	40HC-Flat Pack (30 sets), Assembled (6 sets)	



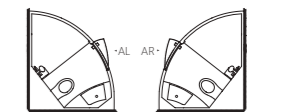
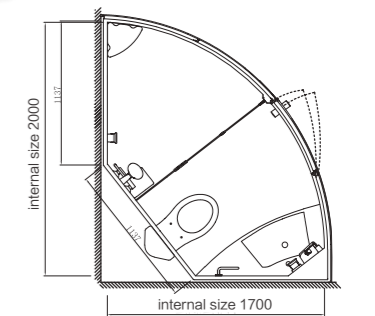
BUL1720-tinghe

Dimensions	Internal	External
Width	1700mm	1800mm
Length	2000mm	2100mm
Height	2150mm	2650mm/2750mm
Available area	3.40m ²	
Weight	≤450kg	
Shipping Info.	40HC-Flat Pack (25 sets), Assembled (6 sets)	



BUL1624

Dimensions	Internal	External
Width	1600mm	1750mm
Length	2400mm	2550mm
Height	2000mm/2200mm	2500mm/2650mm
Available area	3.84m ²	
Weight	≤350kg	
Shipping Info.	40HC-Flat Pack (25 sets), Assembled (4 sets)	



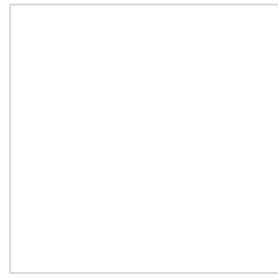
BUL1720-yihe

Dimensions	Internal	External
Width	1700mm	1800mm
Length	2000mm	2100mm
Height	2150mm	2650mm/2750mm
Available area	3.40m ²	
Weight	≤450kg	
Shipping Info.	40HC-Flat Pack (25 sets), Assembled (6 sets)	

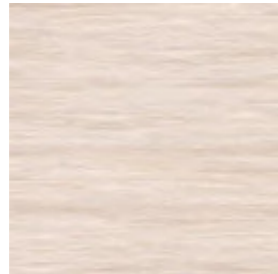
Color Options

Wall colors

Luzy series



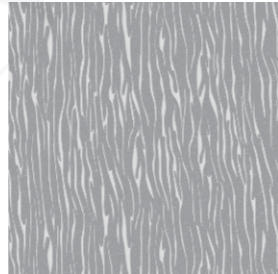
Block White



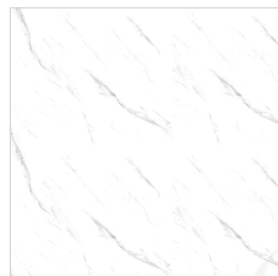
Block Caroy Wood



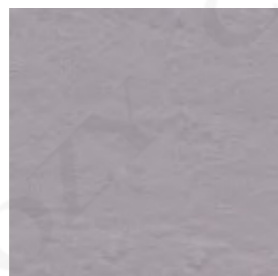
Block Cherry Wood



Block Meteor Shower



Fishbelly White



Stone



Cyan tile



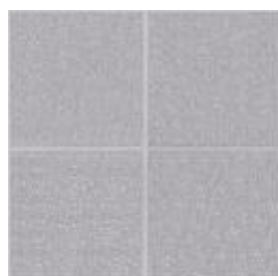
Wood

Floor colors & pattern

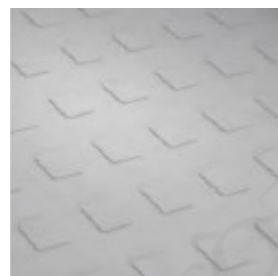
Luzy series



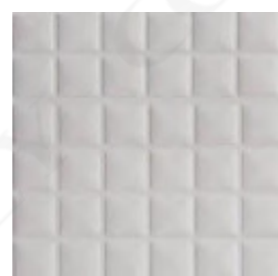
Rectangle Light Gray



Square Stone Pattern



Stone Coffee



Square Light Gray

(only for BUL0816/BUL0818)



Standard Accessories

_LUZY SERIES



NO: 070104009
Name: triangle soap rack
Spec: ABS White



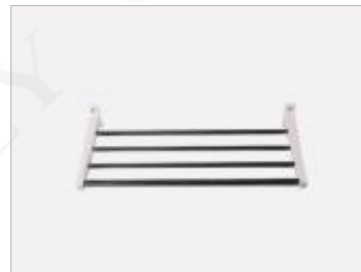
NO: 070104008
Name: rectangle shelf
Spec: ABS White



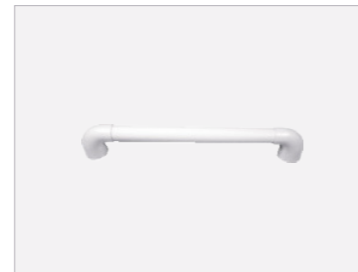
NO: 070105006
Name: paper holder
Spec: ABS White 165*98*85mm



Name: towel rail
Spec: L=400



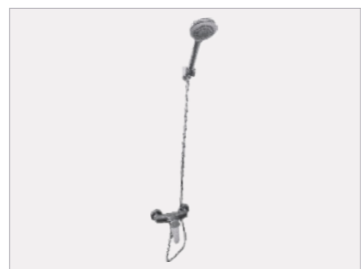
Name: shower rail
Spec: L=400



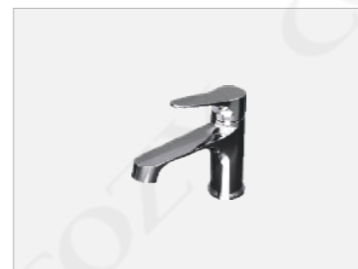
NO: 070401014
Name: handrail
Spec: ABS White L=400



NO: 120401139
Name: exhaust fan
Spec: white



NO: 050302157
Name: shower faucet set
Spec: copper chrome plated



NO: 050301270
Name: basin faucet
Spec: copper chrome plated



NO: 050101601
Name: toilet
Spec: top press 618 series



NO: 030304522/030304094
Name: P basin(R)
Spec: SMC L=1000/1200mm



NO: 030304521/030304095
Name: P basin(L)
Spec: SMC L=1000/1200mm



NO: 030104068/030304519
Name: P basin(R)
Spec: SMC L=700/800mm



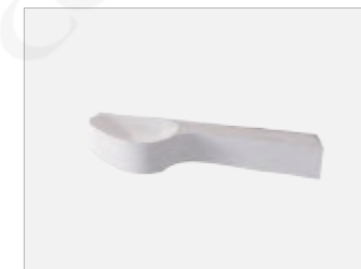
NO: 030104065/030304520
Name: P basin(L)
Spec: SMC L=700/800mm



NO: 1313030152
Name: 46 basin
Spec: SMC L=800



NO: 030304538/030304539
Name: 46 basin (L/R)
Spec: SMC L=1600

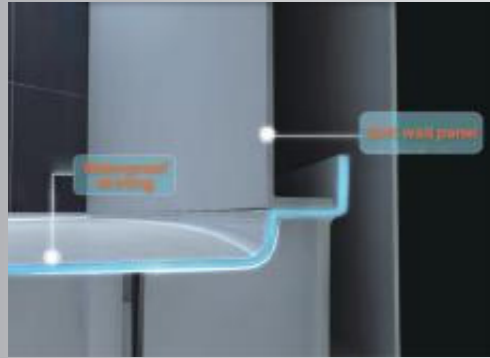


NO: 030404100
Name: SMC basin(L)
Spec: √0816/0818 L=1150



NO: 030404101
Name: SMC basin(R)
Spec: √0816/0818 L=1150

Waterproof Floor



Waterproof floor is press molding by one time, with unique turn-ups water lock design, no leakage, eradicate the ills of traditional bathroom leakages.



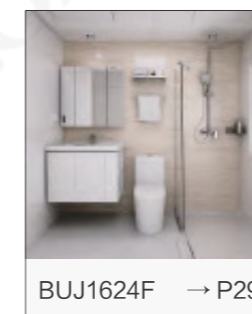
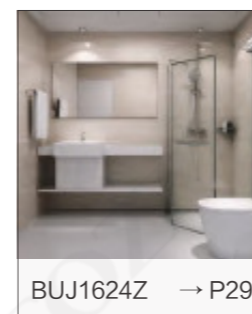
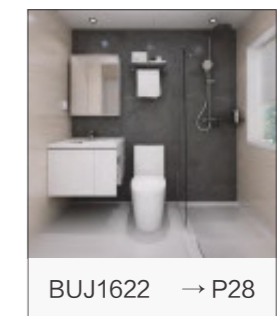
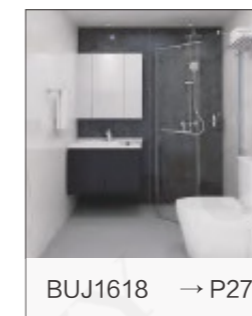
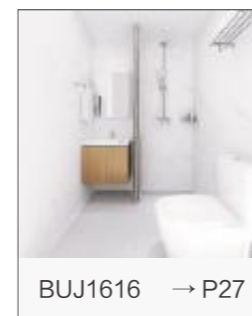
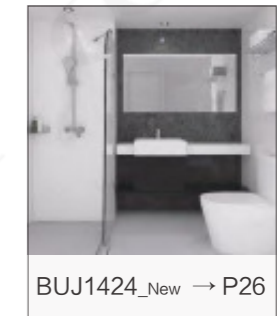
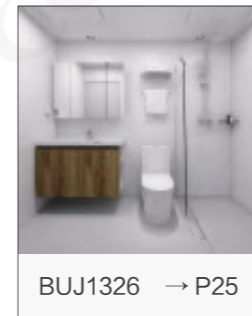
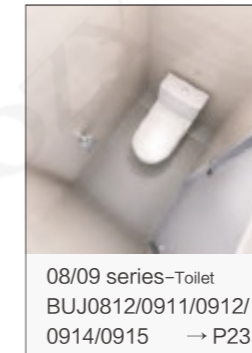
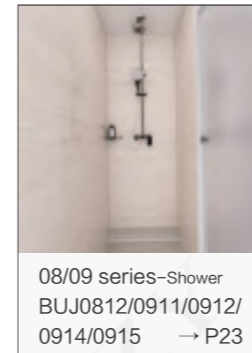
Anti-slip finish/water slope

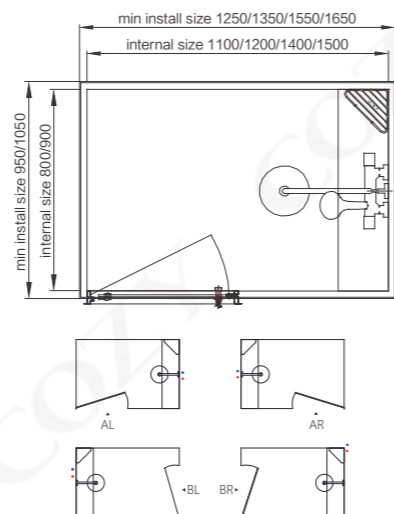
COZY' s SMC waterproof floor uses mosaic patterns to break the tension of the water and increase the contact area of the surface with the water droplets. The water flows faster, with less water accumulation.



COZY' s SMC waterproof floor slope is 10%-16%, facilitates the flow of water, rapid drainage.

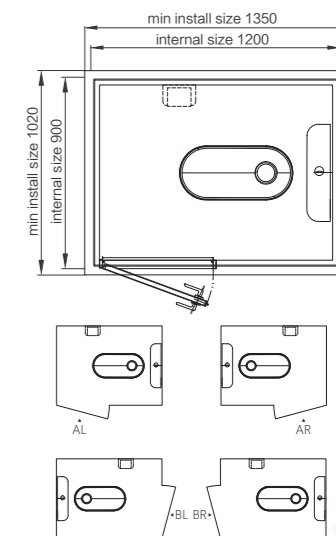
JUZY Models





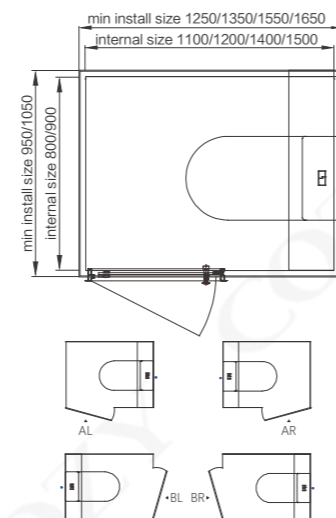
08/09 series-Shower
_0812/0911/0912/0914/0915

Dimensions	Internal	External
Width	800/900mm	950/1050mm
Length	1100/1200/1400/1500mm	1250/1350/1550/1650mm
Height	2300mm	2600mm/2750mm
Available area	0.96m²/0.99m²/1.08m²/1.26m²/1.35m²	
Weight	≤160kg	
Shipping Info.	40HC-Flat Pack (60 sets), Assembled (8/16/14/14 sets)	



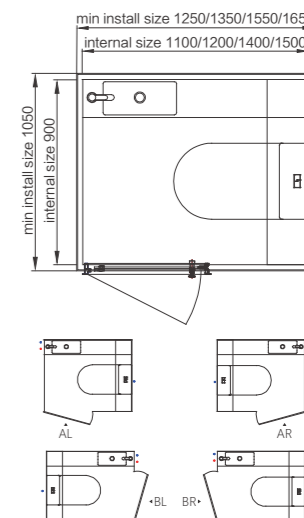
BUJ0912-Squat Toilet

Dimensions	Internal	External
Width	900mm	1050mm
Length	1200mm	1350mm
Height	2300mm	2600mm/2750mm
Available area	0.96m²/0.99m²/1.08m²/1.26m²/1.35m²	
Weight	≤160kg	
Shipping Info.	40HC-Flat Pack (60 sets), Assembled (8/16/14/14 sets)	



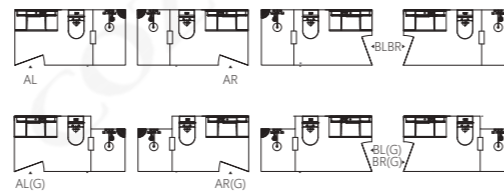
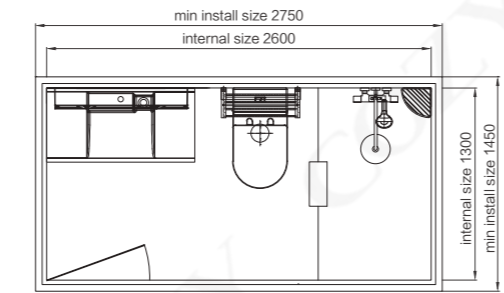
08/09 series-Toilet
_0812/0911/0912/0914/0915

Dimensions	Internal	External
Width	800/900mm	950/1050mm
Length	1100/1200/1400/1500mm	1250/1350/1550/1650mm
Height	2300mm	2600mm/2750mm
Available area	0.96m²/0.99m²/1.08m²/1.26m²/1.35m²	
Weight	≤160kg	
Shipping Info.	40HC-Flat Pack (60 sets), Assembled (8/16/14/14 sets)	



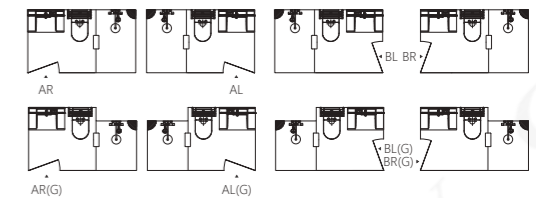
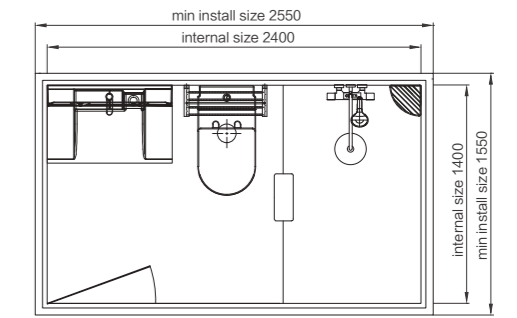
09 series-Toilet
BUJ0911/0912/0914/0915

Dimensions	Internal	External
Width	900mm	1050mm
Length	1100/1200/1400/1500mm	1250/1350/1550/1650mm
Height	2300mm	2600mm/2750mm
Available area	0.99m²/1.08m²/1.26m²/1.35m²	
Weight	≤200kg	
Shipping Info.	40HC-Flat Pack (60 sets), Assembled (18/16/14/14 sets)	



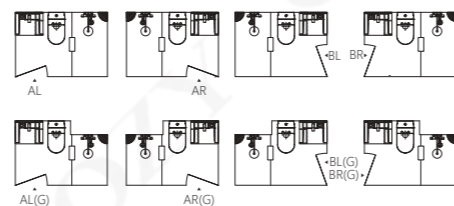
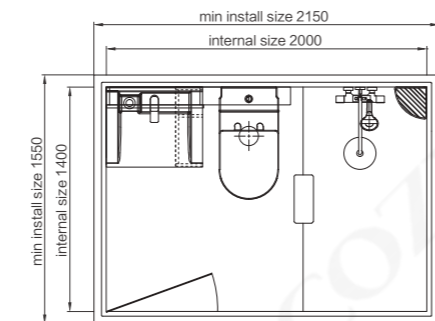
BUJ1326

Dimensions	Internal	External
Width	1300mm	1450mm
Length	2600mm	2750mm
Height	2300mm	2600mm/2750mm
Available area	3.38m ²	
Weight	≤350kg	
Shipping Info.	40HC-Flat Pack (24 sets), Assembled (4 sets)	



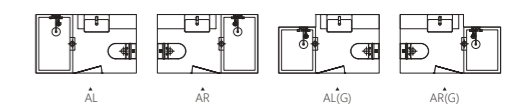
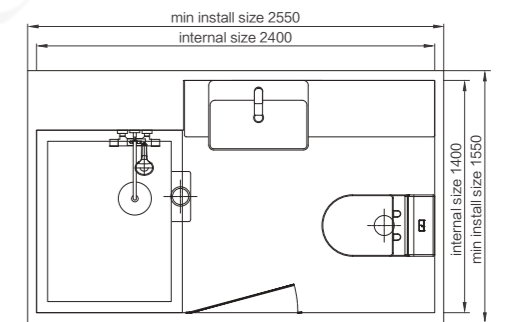
BUJ1424

Dimensions	Internal	External
Width	1400mm	1550mm
Length	2400mm	2550mm
Height	2300mm	2600mm/2750mm
Available area	3.36m ²	
Weight	≤340kg	
Shipping Info.	40HC-Flat Pack (28 sets), Assembled (4 sets)	



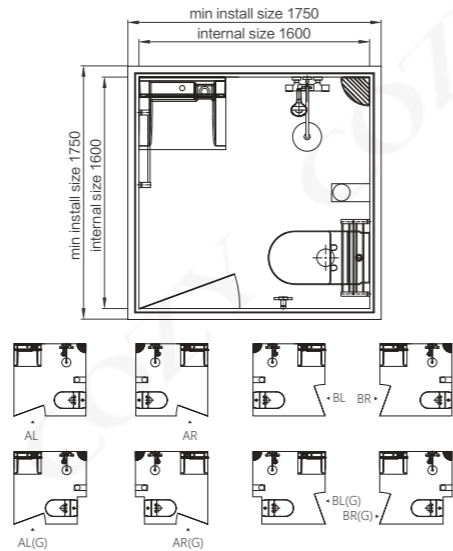
BUJ1420

Dimensions	Internal	External
Width	1400mm	1550mm
Length	2000mm	2150mm
Height	2300mm	2600mm/2750mm
Available area	2.80m ²	
Weight	≤320kg	
Shipping Info.	40HC-Flat Pack (35 sets), Assembled (7 sets)	



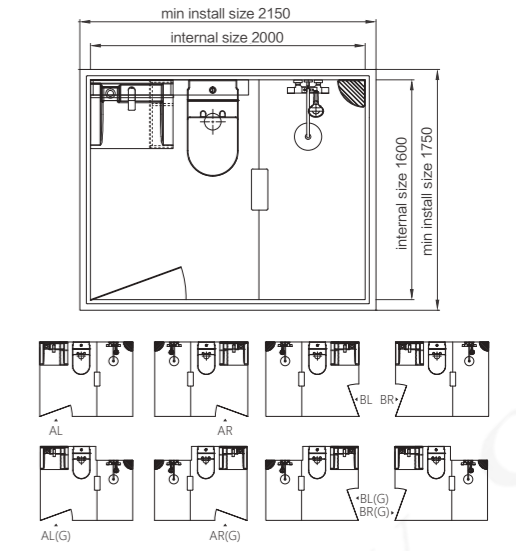
BUJ1424_New

Dimensions	Internal	External
Width	1400mm	1550mm
Length	2400mm	2550mm
Height	2300mm	2600mm/2750mm
Available area	3.36m ²	
Weight	≤340kg	
Shipping Info.	40HC-Flat Pack (26 sets), Assembled (4 sets)	



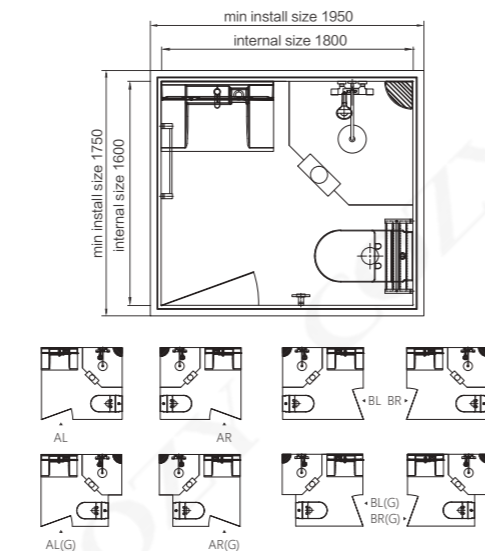
BUJ1616

Dimensions	Internal	External
Width	1600mm	1750mm
Length	1600mm	1750mm
Height	2300mm	2600mm/2750mm
Available area	2.56m ²	
Weight	≤290kg	
Shipping Info.	40HC-Flat Pack (35 sets), Assembled (6 sets)	



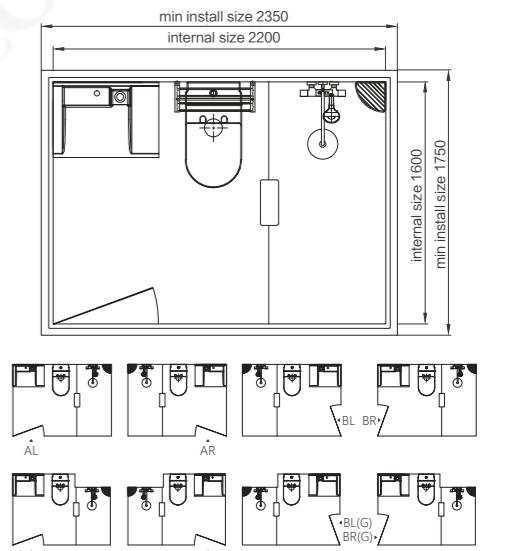
BUJ1620

Dimensions	Internal	External
Width	1600mm	1750mm
Length	2000mm	2150mm
Height	2300mm	2600mm/2750mm
Available area	3.20m ²	
Weight	≤340kg	
Shipping Info.	40HC-Flat Pack (30 sets), Assembled (6 sets)	



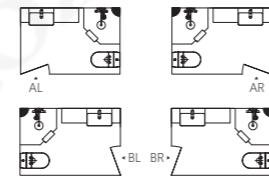
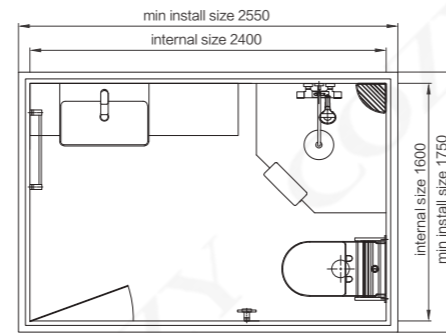
BUJ1618

Dimensions	Internal	External
Width	1600mm	1750mm
Length	1800mm	1950mm
Height	2300mm	2600mm/2750mm
Available area	2.88m ²	
Weight	≤290kg	
Shipping Info.	40HC-Flat Pack (35 sets), Assembled (6 sets)	



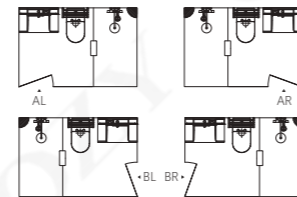
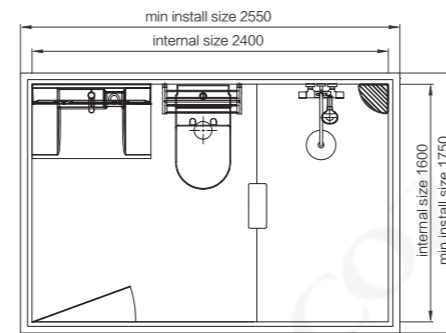
BUJ1622

Dimensions	Internal	External
Width	1600mm	1750mm
Length	2200mm	2350mm
Height	2300mm	2600mm/2750mm
Available area	3.52m ²	
Weight	≤360kg	
Shipping Info.	40HC-Flat Pack (26 sets), Assembled (5 sets)	



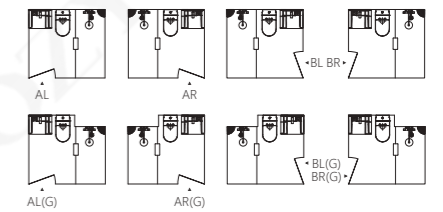
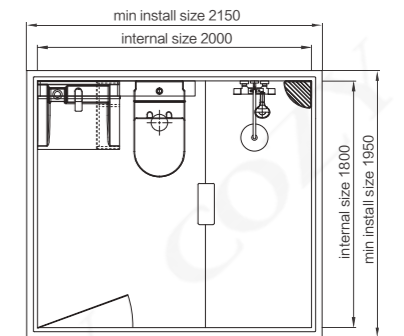
BUJ1624Z

Dimensions	Internal	External
Width	1600mm	1750mm
Length	2400mm	2550mm
Height	2300mm	2600mm/2750mm
Available area	3.84m ²	
Weight	≤380kg	
Shipping Info.	40HC-Flat Pack (25 sets), Assembled (4 sets)	



BUJ1624F

Dimensions	Internal	External
Width	1600mm	1750mm
Length	2400mm	2550mm
Height	2300mm	2600mm/2750mm
Available area	3.84m ²	
Weight	≤370kg	
Shipping Info.	40HC-Flat Pack (25 sets), Assembled (4 sets)	



BUJ1820

Dimensions	Internal	External
Width	1800mm	1950mm
Length	2000mm	2150mm
Height	2300mm	2600mm/2750mm
Available area	3.60m ²	
Weight	≤370kg	
Shipping Info.	40HC-Flat Pack (25 sets), Assembled (6 sets)	

Color Options

Wall colors

Juzy series



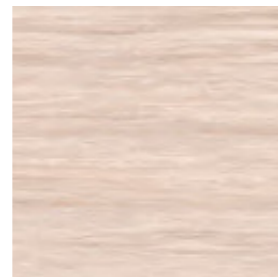
Mirror Wood Stone



Mirror Sea Fog



Mirror Jazz White



Caroy Wood



Mirror Walnut



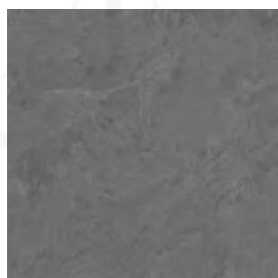
Mirror Light Oak



Mirror Dolomite



Fishbelly White



Stone



Mirror Light Oak



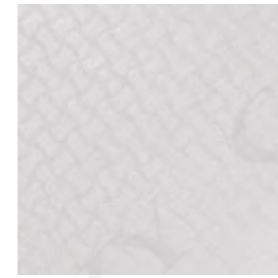
Mirror Dolomite



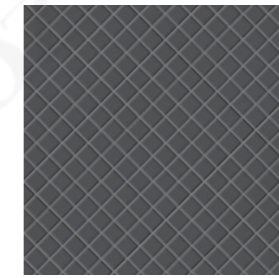
Wood

Floor colors & pattern

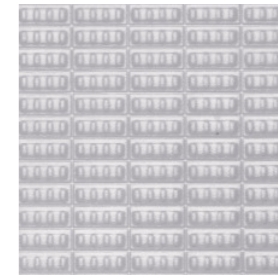
Juzy series



Wave Light Grey
(in common use)



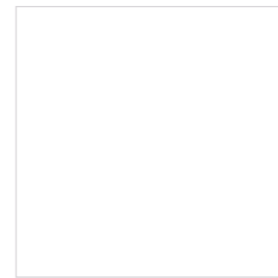
Diamond Square Gray



Long Grey Dot
(only for 08, 09)

Bathroom cabinet color

Juzy series



White



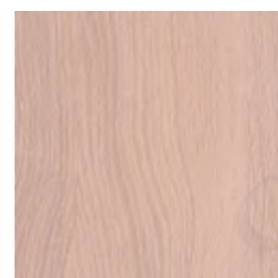
Grey



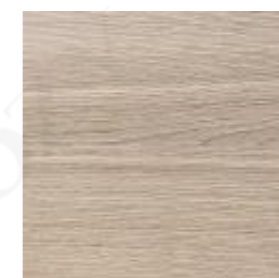
Dark Grey



Walnut Color



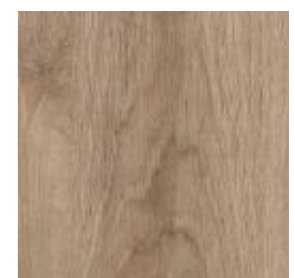
Balaqui



XD-1342



Oak-2



Oak-3

Standard Accessories

JUZY SERIES

Bathroom Pendant



NO: 070104086
Name: triangle soap rack
Stainless steel



NO: 070102117
Name: towel rail
Stainless steel L=500mm



NO: 070102116
Name: shower rail
Stainless steel L=500mm



NO: 070105019
Name: double paper holder
Spec: ABS

Faucet Shower



NO: 050302097
Name: shower faucet set
Copper chrome plating



NO: 050301091
Name: basin faucet
Copper chrome plating



Name: wash basin
Spec: ceramic white



Name: wash basin
Spec: artificial stone white L=1400mm

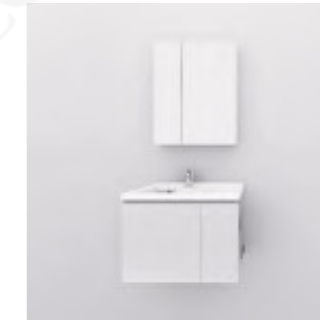


NO: 050101205
Name: toilet 8651

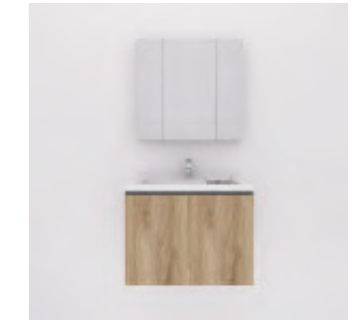
Basin Cabinet



Name: basin cabinet_600
Spec: 600shower cabinet, 600mirror, wash basin



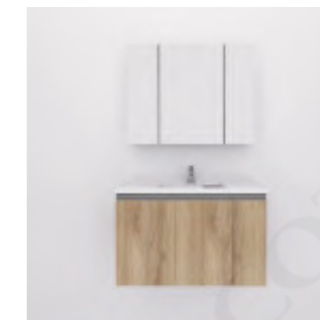
Name: basin cabinet_700
Spec: 700shower cabinet, 600mirror, wash basin



Name: basin cabinet_800
Spec: 800shower cabinet, 800mirror, wash basin



Name: basin cabinet_600
Spec: 1150shower cabinet, 600mirror, wash basin



Name: basin cabinet_800/1000
Spec: 800/1000shower cabinet, 800/1000mirror, wash basin



Name: basin cabinet_900/1200
Spec: 900/1200shower cabinet, 500*700mirror, wash basin



Name: basin cabinet_1400
Spec: 1400shower cabinet, 700*1350mirror, wash basin

Whirlpool Drain

Cozy drain uses international leading technology, with anti blocking function. Floor drain rate is higher than the national standard and more scientific.



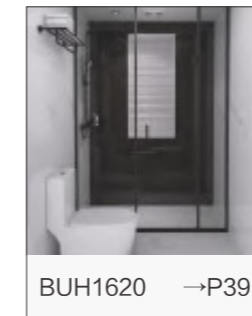
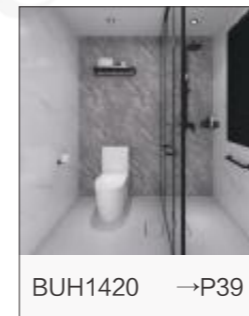
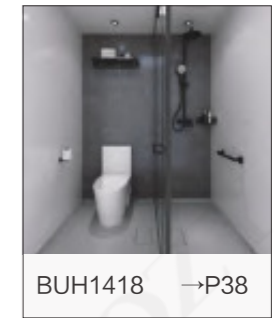
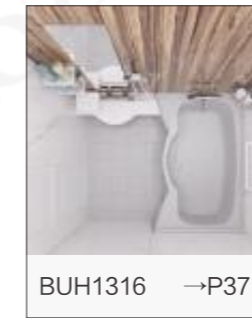
Floor drain to prevent odor

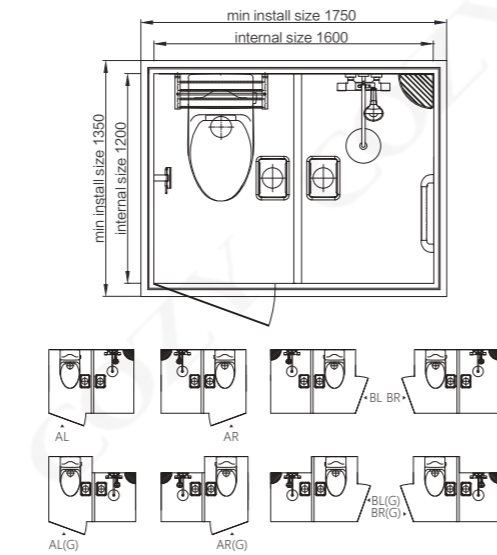
With a 50-70mm drain water seal, it prevents the smelly from the sewage pipes. Prevent back odor and keep the air fresh.

Quick clean up step



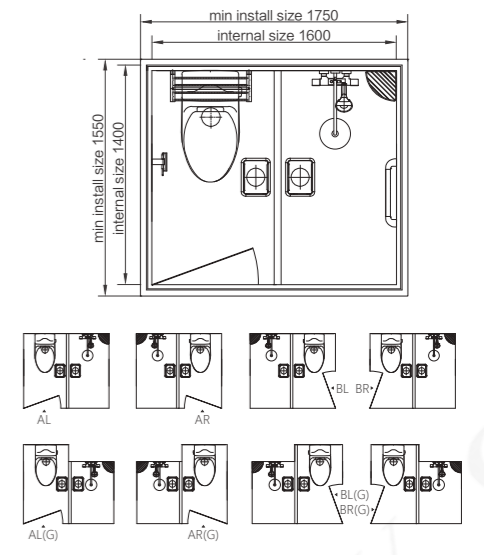
HOZY Models





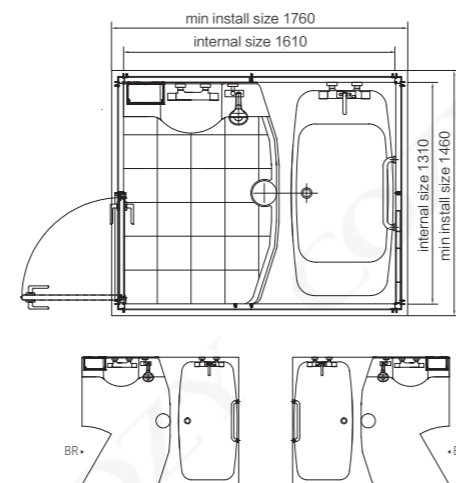
BUH1216

Dimensions	Internal	External
Width	1200mm	1350mm
Length	1600mm	1750mm
Height	2300mm	2600mm/2750mm
Available area	1.92m ²	
Weight	≤240kg	
Shipping Info.	40HC-Flat Pack (40 sets), Assembled (8 sets)	



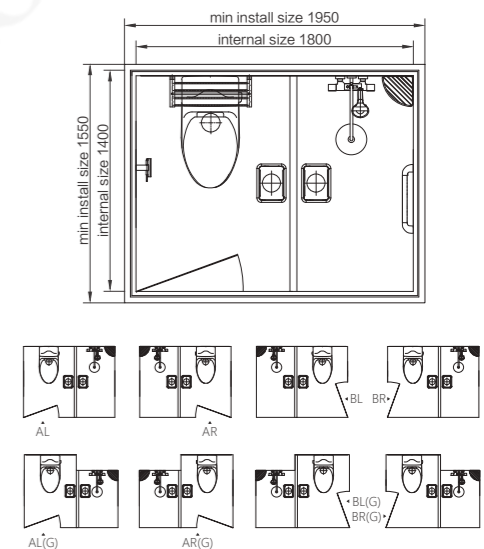
BUH1416

Dimensions	Internal	External
Width	1400mm	1550mm
Length	1600mm	1750mm
Height	2300mm	2600mm/2750mm
Available area	2.24m ²	
Weight	≤260kg	
Shipping Info.	40HC-Flat Pack (30 sets), Assembled (7 sets)	



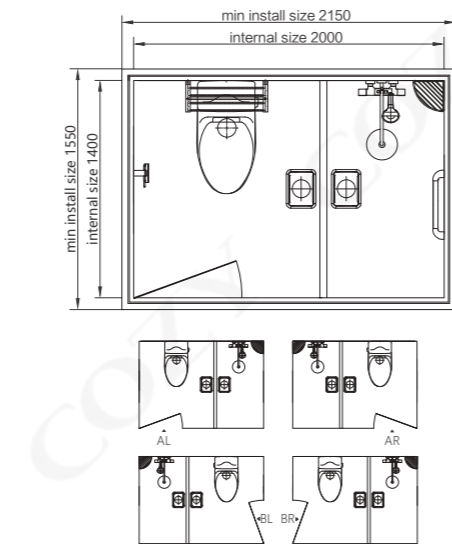
BUH1316

Dimensions	Internal	External
Width	1310mm	1460mm
Length	1610mm	1760mm
Height	2100mm	2750mm
Available area	2.08m ²	
Weight	≤250kg	
Shipping Info.	40HC-Flat Pack (22 sets), Assembled (7 sets)	



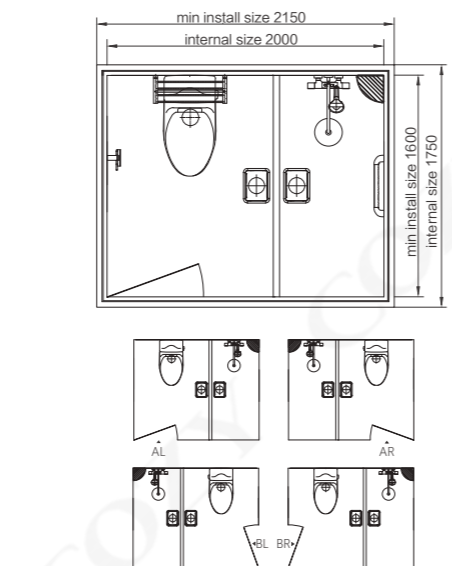
BUH1418

Dimensions	Internal	External
Width	1400mm	1550mm
Length	1800mm	1950mm
Height	2300mm	2600mm/2750mm
Available area	2.52m ²	
Weight	≤270kg	
Shipping Info.	40HC-Flat Pack (35 sets), Assembled (7 sets)	



BUH1420

Dimensions	Internal	External
Width	1400mm	1550mm
Length	2000mm	2150mm
Height	2300mm	2600mm/2750mm
Available area	2.80m ²	
Weight	≤300kg	
Shipping Info.	40HC-Flat Pack (26 sets), Assembled (7 sets)	



BUH1620

Dimensions	Internal	External
Width	1600mm	1750mm
Length	2000mm	2150mm
Height	2300mm	2600mm/2750mm
Available area	3.20m ²	
Weight	≤320kg	
Shipping Info.	40HC-Flat Pack (24 sets), Assembled (6 sets)	

HOZY Color Options

Wall colors

Hozy series



Mirror Light Oak



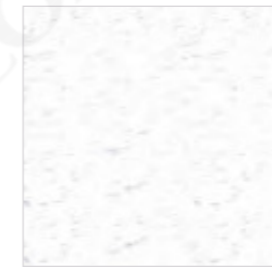
Mirror Sea Fog



Mirror Dover Stone



Fishbelly White



Mirror Jazz White

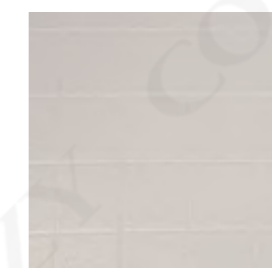
Floor colors

Hozy series



Gridding Light Gray

BUH1420/BUH1620



Squares Light Gray

BUH1216/BUH1416/BUH1418

Standard Accessories

— HOZY SERIES

Hardware



NO: 070104065
Name: triangle soap rack
Spec: black



NO: 070101182
Name: towel rail
Spec: black L=500mm



NO: 070102126
Name: shower rail
Spec: black L=500mm



NO: 070501022
Name: handrail
Spec: black L=400mm



NO: 070105178
Name: paper holder
Spec: black



NO: 120401064
Name: exhaust fan
Spec: white

Faucet Shower



NO: 050302120
Name: shower faucet set
Spec: black



NO: 050301081
Name: basin faucet
Spec: black



Name: wash basin
Spec: ceramic white

Ceramic Toilet



No: 050101205
Name: toilet
Spec: top press 8651 series

Six Application Fields



Ibis Hotel



Beijing Lecheng Retirement Apartment



Vanke Real Estate



Peking University First Hospital



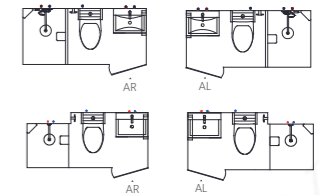
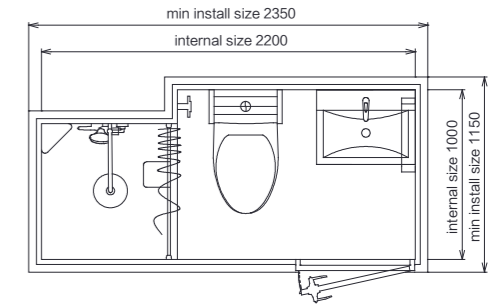
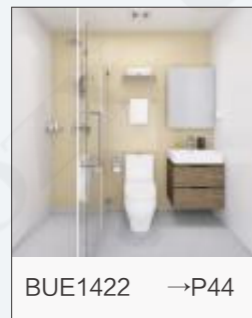
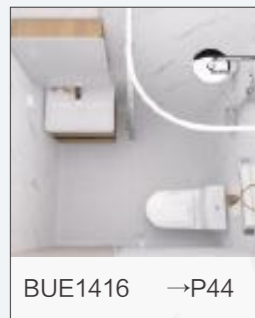
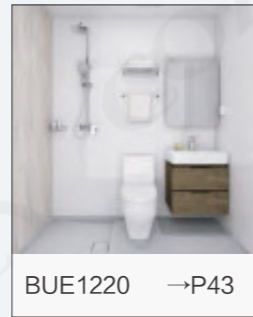
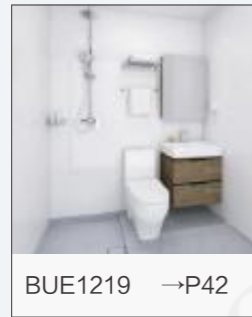
Antarctic Modular House Project



New Century Cruise Group

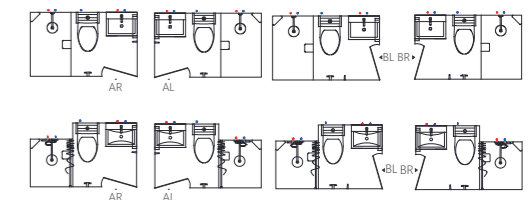
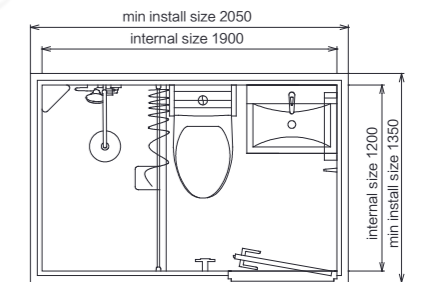
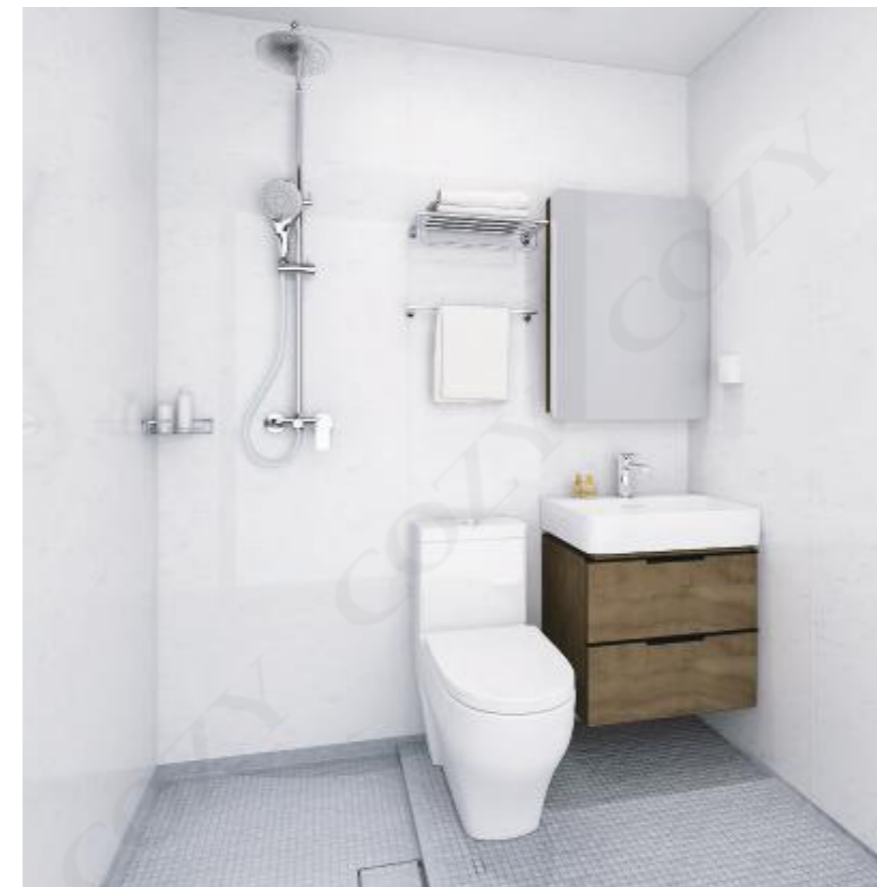
ENJOY Models

P43-P47
ENJOY SERIES



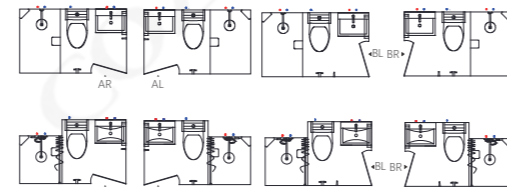
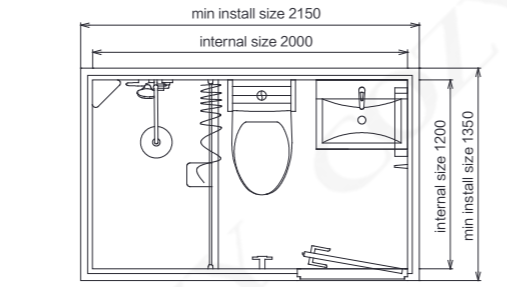
BUE1022

Dimensions	Internal	External
Width	1000mm	1150mm
Length	2200mm	2350mm
Height	2000mm/2200mm	2500mm/2650mm
Available area	2.20m ²	
Weight	≤240kg	
Shipping Info.	40HC-Flat Pack (40 sets), Assembled (5 sets)	



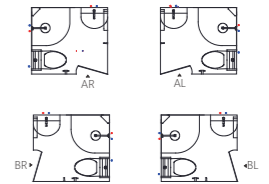
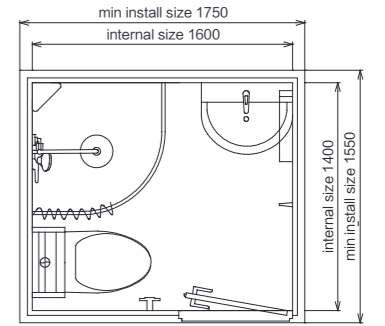
BUE1219

Dimensions	Internal	External
Width	1200mm	1350mm
Length	1900mm	2050mm
Height	2000mm/2200mm	2500mm/2650mm
Available area	2.28m ²	
Weight	≤250kg	
Shipping Info.	40HC-Flat Pack (35 sets), Assembled (8 sets)	



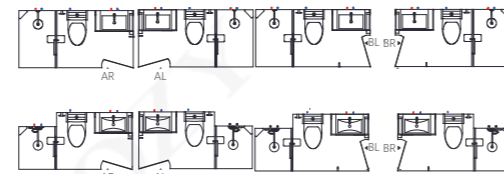
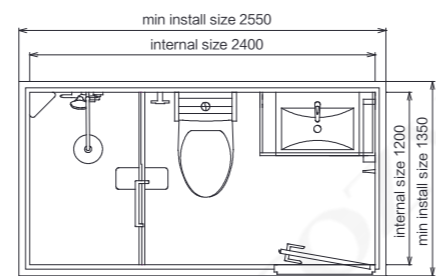
BUE1220

Dimensions	Internal	External
Width	1200mm	1350mm
Length	2000mm	2150mm
Height	2000mm/2200mm	2500mm/2650mm
Available area	2.40m ²	
Weight	≤270kg	
Shipping Info.	40HC-Flat Pack (35 sets), Assembled (8 sets)	



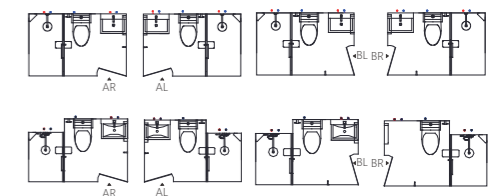
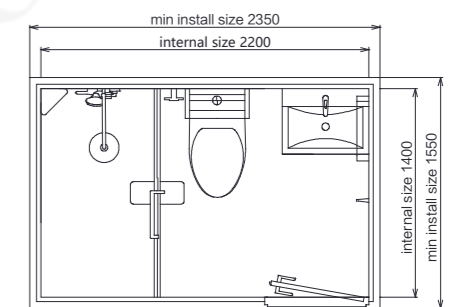
BUE1416

Dimensions	Internal	External
Width	1400mm	1550mm
Length	1600mm	1750mm
Height	2000mm/2200mm	2500mm/2650mm
Available area	2.24m ²	
Weight	≤260kg	
Shipping Info.	40HC-Flat Pack (35 sets), Assembled (7 sets)	



BUE1224

Dimensions	Internal	External
Width	1200mm	1350mm
Length	2400mm	2550mm
Height	2000mm/2200mm	2500mm/2650mm
Available area	2.88m ²	
Weight	≤300kg	
Shipping Info.	40HC-Flat Pack (25 sets), Assembled (4 sets)	



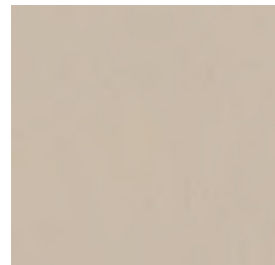
BUE1422

Dimensions	Internal	External
Width	1400mm	1550mm
Length	2200mm	2350mm
Height	2000mm/2200mm	2500mm/2650mm
Available area	3.08m ²	
Weight	≤330kg	
Shipping Info.	40HC-Flat Pack (32 sets), Assembled (5 sets)	

Color Options

Wall colors

Enjoy series



Mirror Stone



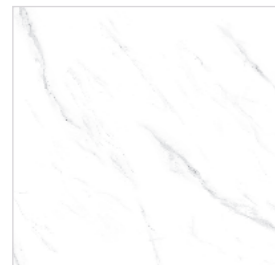
Mirror Teak Wood



Mirror Wood Stone



Mirror Jazz White



Fishbelly White

Wall texture

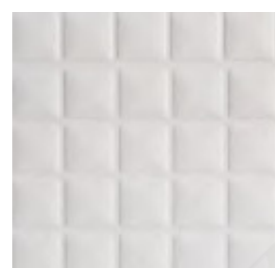
Enjoy series



Mirror



Plica Ivory



Square Light Gray



Square Deep Gray

Floor colors

Enjoy series

Overseas Market

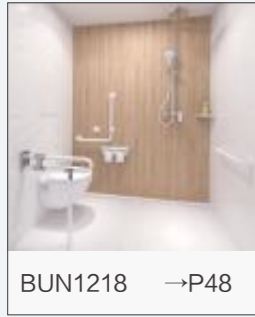


COZY has established a network of over **100** sales offices domestic and abroad.

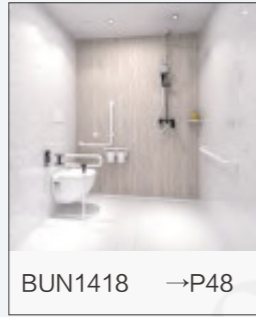
Asia	Mongolia, South Korea, Japan, Philippines, Vietnam, Cambodia, Myanmar, Thailand, Malaysia, Singapore, Indonesia, India, Pakistan, Kazakhstan, Oman
Europe	Russia, Germany, England, Netherlands, France, Italy
North America	United States, Canada
South America	Columbia, Ecuador
Africa	Angola, Chad, South Sudan, Kenya, Mozambique, Zambia
Oceania	Australia, Papua New Guinea
Antarctican	Antarctic Project

ANZY Models

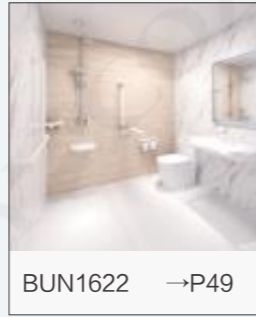
P49-P52
ANZY SERIES



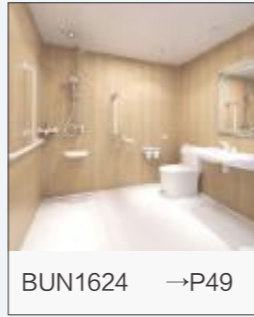
BUN1218 →P48



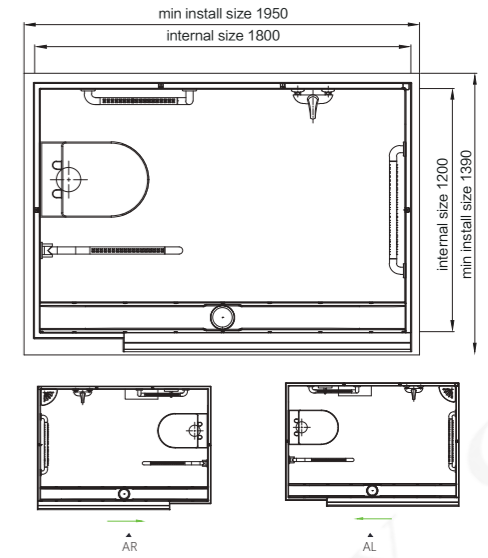
BUN1418 →P48



BUN1622 →P49

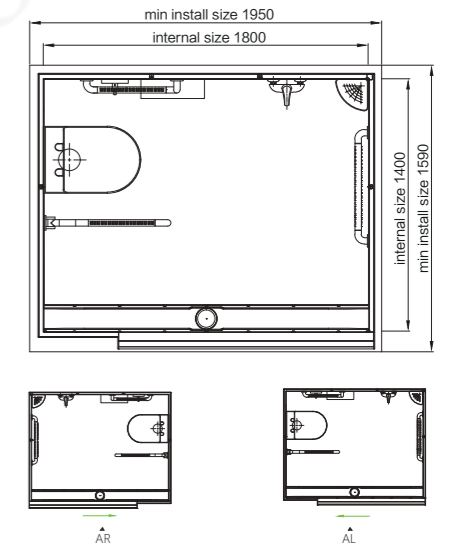


BUN1624 →P49



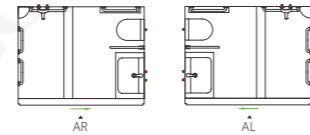
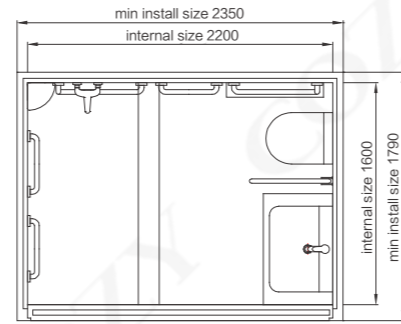
BUN1218

Dimensions	Internal	External
Width	1200mm	1390mm
Length	1800mm	1950mm
Height	2200mm/2300mm	2650mm/2750mm
Available area	2.16m ²	
Weight	≤260kg	
Shipping Info.	40HC-Flat Pack (40 sets), Assembled (9 sets)	



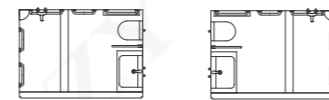
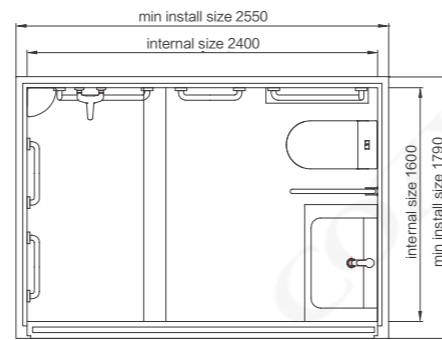
BUN1418

Dimensions	Internal	External
Width	1400mm	1590mm
Length	1800mm	1950mm
Height	2200mm/2300mm	2650mm/2750mm
Available area	2.52m ²	
Weight	≤270kg	
Shipping Info.	40HC-Flat Pack (35 sets), Assembled (7 sets)	



BUN1622

Dimensions	Internal	External
Width	1600mm	1790mm
Length	2200mm	2350mm
Height	2200mm/2300mm	2650mm/2750mm
Available area	3.52m ²	
Weight	≤360kg	
Shipping Info.	40HC-Flat Pack (26 sets), Assembled (5 sets)	



BUN1624

Dimensions	Internal	External
Width	1600mm	1790mm
Length	2400mm	2550mm
Height	2200mm/2300mm	2650mm/2750mm
Available area	3.84m ²	
Weight	≤370kg	
Shipping Info.	40HC-Flat Pack (25 sets), Assembled (4 sets)	

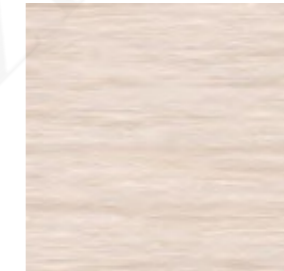
Color Options

Wall colors

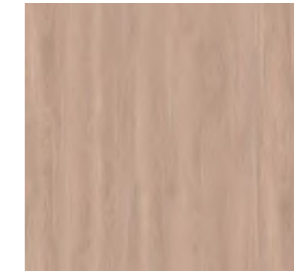
Anzy series



Light oak



Caroy Wood



Cherry Wood



Light Yellow Cameo



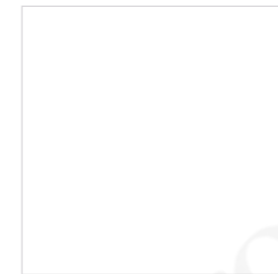
Mirror Jazz White



Fishbelly White

Floor colors

Anzy series



White



Light Gray

Technical Information

Diagram for panels connection

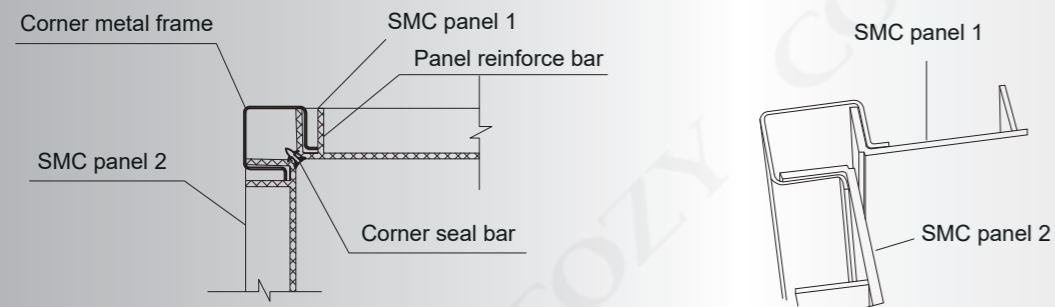
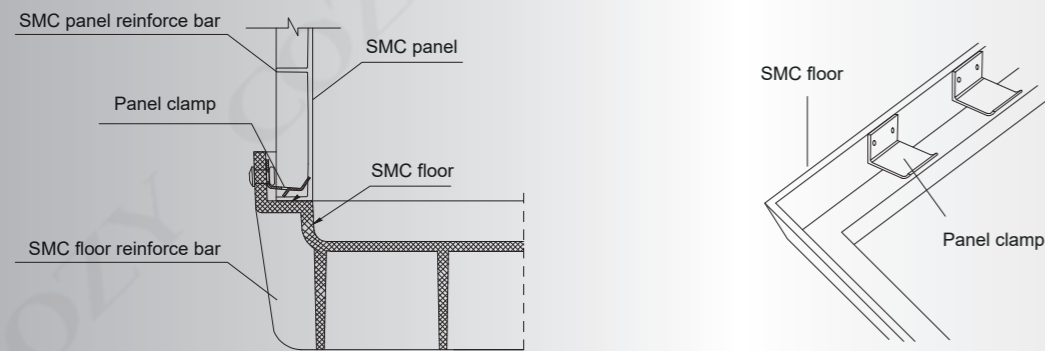
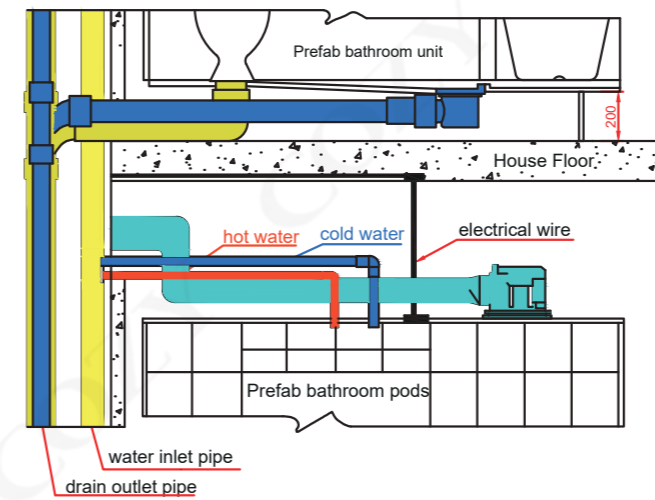
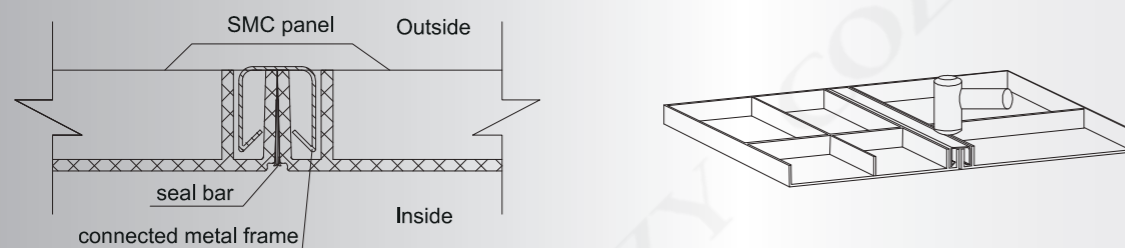


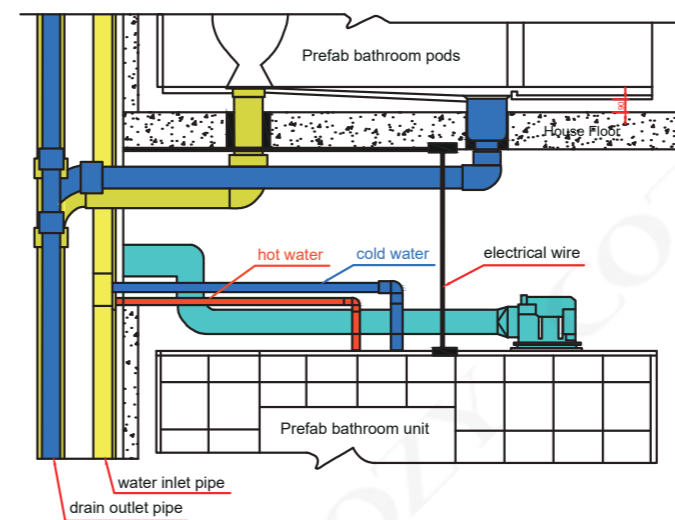
Diagram for panel and floor



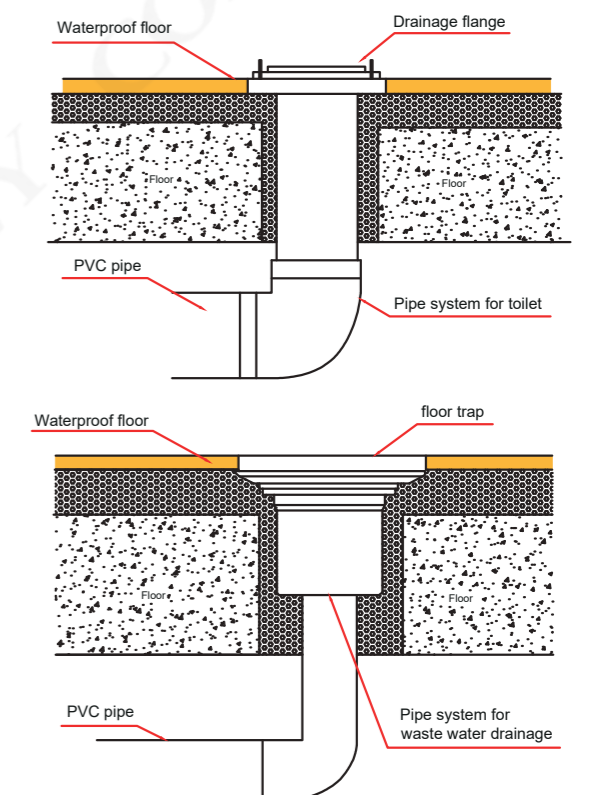
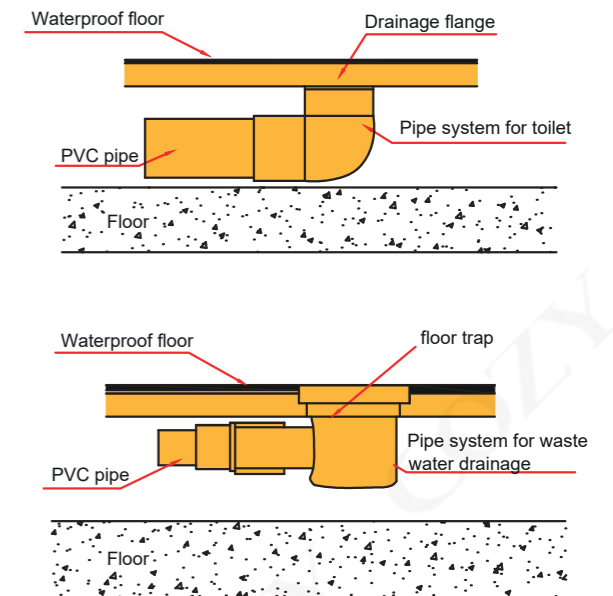
Panel installation structure



Horizontal drain style



Vertical drain style



Packing & Transportation

40HC-Assembled



40HC-Flat Packing

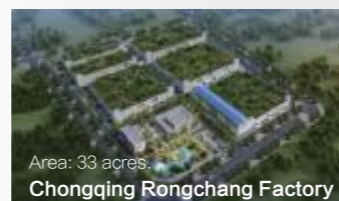


Fast Installation

Using dry construction and "building blocks" installation, a complete bathroom can be installed in 4 hours.



Six Factories



Company Profile

Suzhou Cozy International House Tech Co.,Ltd is located in Suzhou Industrial Park, Jiangsu province, a garden city adjacent to Shanghai.

Established in **2006**, we now own six manufacturing bases respectively with a land area of about **800,000** square meters in total. Now we have **30** standardized production lines with generally **1,500** working staffs. Professional in the manufacturing of **prefab bathroom unit, prefab kitchen, shower tray and shower walls**, we've been large scale enterprises worldwide. Until now we owns more than **60 percent** of share in domestic market and supplies prefab bathroom units to more than **30 countries** all around the world, covering the fields of **hotels, apartments, hospitals, etc.** obtaining consistently high praise from customers.

COZY always upholds entrepreneur spirits to achieve a healthy and civilized life style, is making no efforts to promoting the industrialization and modernization of buildings. We sincerely welcome you to visit our company and contact us for cooperation.



350+ authorized patents

53 design patents

21 patents of invention

86 copyright patents

57 patents for utility models

History

“ Since
2006

From 0 to 1
Trace back to the birth and growth of COZY
From 1 to ∞
Explore the development of prefabricated interior

Explore the development process of the enterprise,
you can understand us better.

Aug.2006



Establishment

Dec.2009



Toyoko Inn
Hotel Provider

May.2012



Suzhou
Xiangcheng
Factory

Nov.2012



National Housing
Industry Base

Jun.2008



Suzhou Industrial
Park Factory

Mar.2011



Cooperation with
Husetec

Oct.2012



Vanke Supplier

Dec.2012



Anhui Wuhu Factory

Feb.2014



Taishan Station,
Antarctica

Jan.2013



Prefab Kitchen
Unit

Nov.2014



Integrated Interior
Decoration

Dec.2016



Intellectual Property
Management System
Certification

Jan. 2017



Suzhou Residential
Experience Hall

Dec.2015



Listed on New
Three Board

Mar. 2018



SMC Mold
Cupboard

Nov.2018



Hubei Guangshui
Factory

Dec.2018



Hebei Hengshui
Factory

Jan. 2019



Guangdong
Longchuan Factory

Mar. 2019



Chongqing
Rongchang
Factory

Jun. 2019



Ceramic Sheet
Composite
Production Line

Oct. 2019



Guangshui Factory
Ran into Production

Feb. 2020



Wuhan "Leishenshan"
and "Huoshenshan"
Epidemic Hospitals

Nov. 2021



Winter
Olympics

Jan. 2022



Construction of
Health Post Stations

科逸 | COZY

Projects



CitizenM

CitizenM Hotel is a new-style Dutch hotel group that aims to provide travelers with world-class luxury and comfort in the central city. Since 2013, the Taiwan branch and Shanghai branch of Asia's first store have successively used COZY's bathroom units. Cozy has accumulated a good reputation in the industry by virtue of fast delivery, reliable quality and good service.

IBIS hotel

The French Accor Group is one of the world's largest hotel management groups and a leader in the European hotel industry. It has more than 4,000 hotels in 90 countries, and its brands include Sofitel, Novotel, and Ibis. COZY has provided more than 5,000 sets of bathroom units for nearly 30 Ibis hotels.



Toyoko INN hotel

Toyoko inn hotel group is Japan's largest business hotel group. Before cooperating with COZY, Toyoko has been working with Hitachi for 20 years. With stable quality, fast delivery and good service, COZY got the chance to work with Toyoko, which gave up 20 years cooperation with Hitachi.

Since 2010, COZY became global only designated bathroom supplier for Toyoko, and already delivered to Japan at nearly 20000 sets so far.



NOVOTEL

Novotel Hotel is under the French Accor Group. The design of the hotel takes into account both aesthetic value and practical function. It shows a modern atmosphere but can be called a classic. It is simple, simple and formal. When you come to Novotel, you can enjoy a good life anytime, anywhere. Since 2015, COZY has provided more than 1,000 sets of bathroom units to Novotel Hotel (Hefei Wanda, Anhui).



Mercure

Mercure is a non-standard mid-range hotel brand under the AccorHotels Group. It is the first multi-brand chain hotel management group in China. It has more than 3,000 hotels in more than 360 cities in China. Since 2015, COZY has cooperated with Novotel Hotels in Hefei, Nanchang and Changbai Mountain.



RIOTINTO

Several influential mining companies in the world acquired the Northern Mining Corporation of Australia in 2000, becoming a leader in the exploration, mining and processing of mineral resources and one of the iron ore companies. Part of the staff dormitory adopts the container house model, and all of them use the bathroom units of COZY.

Partners



P.S. : All (names are arranged) in random order.